

State of Wyoming Corner Record

(In compliance with the *CORNER PERPETUATION AND FILING ACT*, Wyoming Statutes, 1977, Section 36-11-101, et. seq., and the Rules and Regulations of the Board of Registration for Professional Engineers and Professional Land Surveyors)

Reverse side of this form may be used if more space is needed.

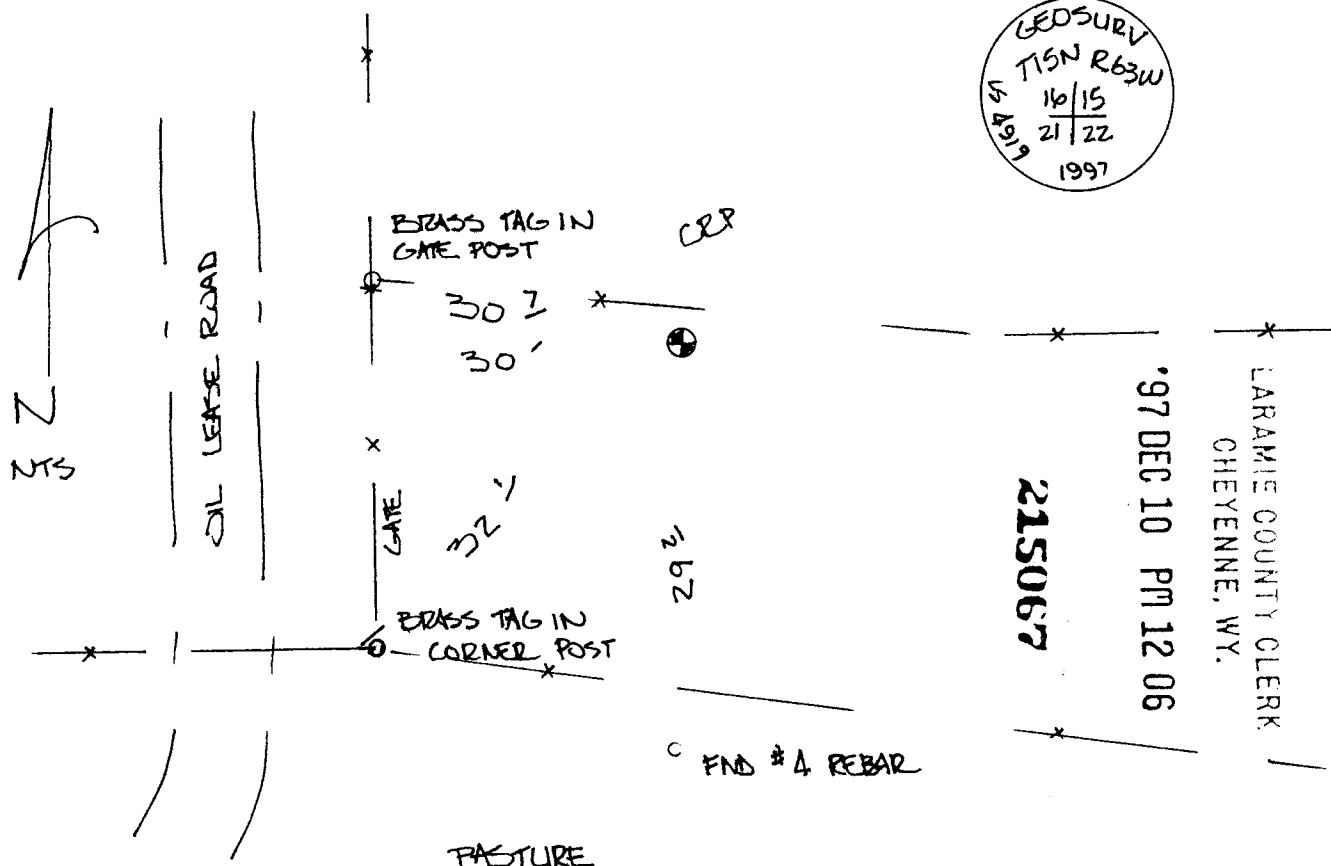
Record of original survey and citation of source of historical information (if corner is lost or obliterated). Description of corner monumentation evidence found and/or monument and accessories established to perpetuate the location of this corner. Sketch of relative location of monument, accessories, and reference points with course and distance to adjacent corner(s) (if determined in this survey). Method and rationale for reestablishment of lost or obliterated corner.

ORIGINAL CALL:

SANDSTONE 20" x 8" x 6"

FOUND PLASTIC CAP ON 12" LONG #4 REBAR. CAP IS WEATHERED, BROKEN AND ILLEGIBLE.

REMOVE #4 REBAR AND REPLACE WITH 2 1/2" ALUMINUM CAP ON 30" LONG #6 REBAR, STAMPED AS SHOWN. MONUMENT FALLS ON LINE WITH OLD FENCE LINE TO THE EAST.



Date of Field Work: 11-04-97

Office Reference: SLO

CROSS INDEX DIAGRAM

A	1	2	3	4	5	6	7	8	9	10	11	12	13	14	15	16	17	18	19	20	21	22	23	24	25
B																									
C	6																								
D																									
E																									
F																									
G	7																								
H																									
J																									
K																									
L	18																								
M																									
N																									
O																									
P	19																								
Q																									
R																									
S																									
T	30																								
U																									
V																									
W																									
X	31																								
Y																									
Z																									

Firm/Agency, Address

JOHN D GUYTON
GEOSURV INC
620 STACY CT STE B
LAFAYETTE CO 80026

Telephone Number: 303 666 0379

This corner record was prepared by me or under my direction and supervision.
 SEAL & SIGNATURE



Corner Name: SE SECTION COR Section: 16 T 15N R 63W: 6 P.M. Cross-Index No.: N-13
 SBRPEPLS/PLSW: March 1994

BOOK 1467

0755